



**DEEPWATER
BENTHIC ID GUIDE
2022-23**



SEAFOOD
NEW ZEALAND

Benthic ID Quiz image credits: Ministry of Primary Industries, NIWA, DOC

S:\PROJECTS\2022-23 Projects\2301 Benthic Effects\Coral ID guide\Deepwater Benthic ID Guide 150323.docx

Monday, 5 August 2024

TAKE THE BENTHIC ID QUIZ

To take the **Benthic ID Quiz**, please scan the QR code with your mobile device or enter this URL tinyurl.com/BenthicIDQuiz on your PC to open the quiz online at EdApp.com.



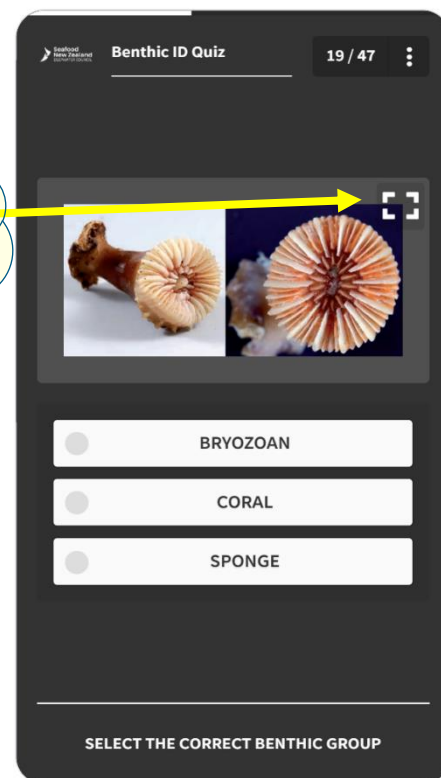
Once you've set up an account, identifying the 42 images will take about 15 minutes.

The registration form on the left includes the following fields:

- Welcome to EdApp**
We just need a few extra details from you to create your account.
- Email**
Enter your email
- Create Your New Password**
Enter your password
- First name**
Enter your first name
- Last name**
Enter your last name

The image on the right is a close-up of a benthic organism, likely a bryozoan, showing its characteristic orange and white striped structure.

To enlarge images on your mobile device, click the icon in the top right corner of the image.



While we're looking at integrating the quiz with the DWG OP app, for now, we're using this software aimed at the educational sector, which is why the quiz is referred to as a 'lesson' and in places may feel somewhat childish.

The quiz is designed as a training resource for fishers to ensure they can use the identification resources provided by DWG to correctly ID corals, bryozoans, and sponges and use the correct reporting codes.

It is not a test – there is no pass or fail.

Please make sure you have the following in front of you when completing the quiz:

- *Deepwater Benthic ID Guide 2022-23* (this document)
 - *DOC Coral Identification Guide* tinyurl.com/CoralGuideDOC
- Both documents can be accessed from the "Briefcase" when you open the EdApp website or app.

For more information on sponges: [Splendid Sponges Version4 2022 NIWA web.pdf](#)

For more information on bryozoans: [Bountiful bryozoans - a guide to the bryozoans of New Zealand \(niwa.co.nz\)](#)

For any questions or clarification please call:

John Cleal – Environmental Liaison Officer on 021 305 825

Ben Steele-Mortimer – Environmental Manager on 027 234 3140

CORAL (COU)

- Corals are tiny inter-connected individual 'polyps' that sit on an exoskeleton made of calcium carbonate. The polyp is shaped like a tube with a mouth surrounded by tentacles at one end and is the living part of the animal.
- Corals have very diverse shapes, including sea fan, bushy, tree, spiral and reef-building forms. Most of them are protected species.
- Use code COU for all unidentifiable corals.



CORAL (COU)



Stony branching coral



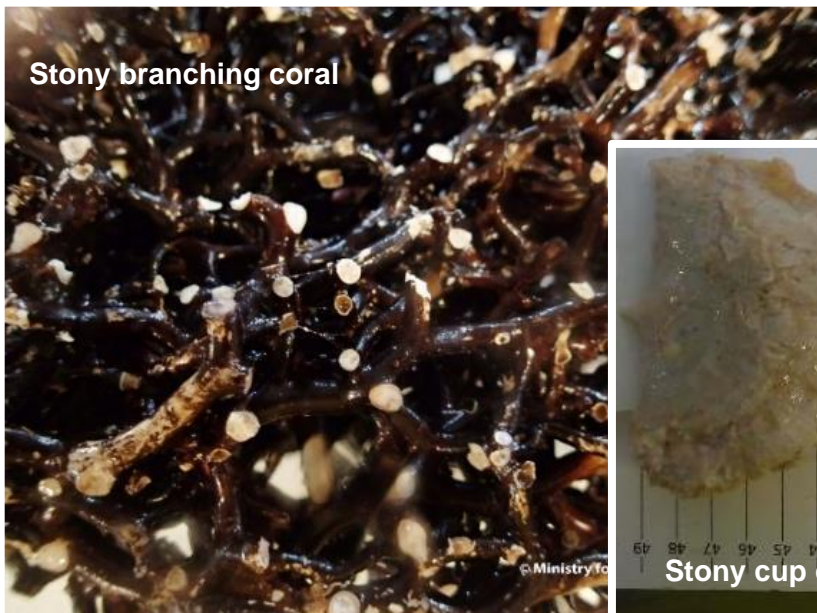
Anthothelid coral



Stony cup coral



Bubblegum coral



Stony branching coral

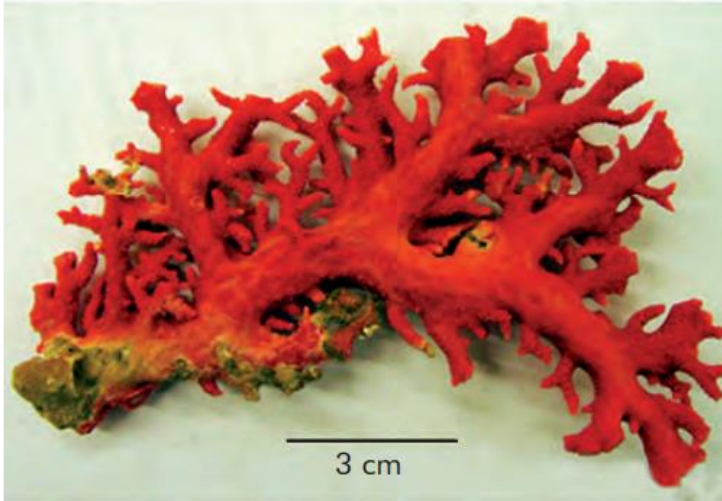


Stony cup coral

CORAL (COU)

Red hydrocorals (ERR)

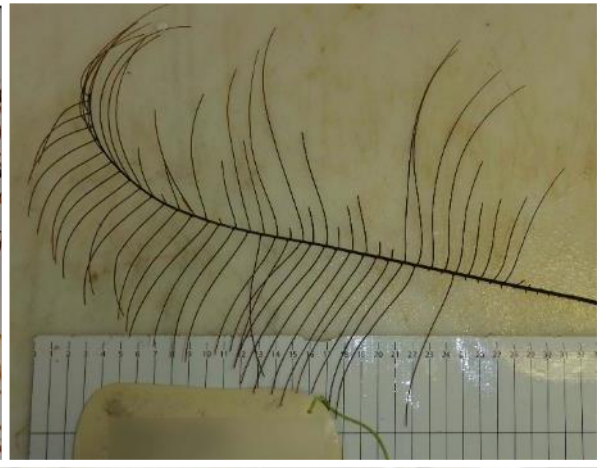
Only use this code if you are certain of the coral type. **If you are uncertain of the coral type, use code COU.**



CORAL (COU)

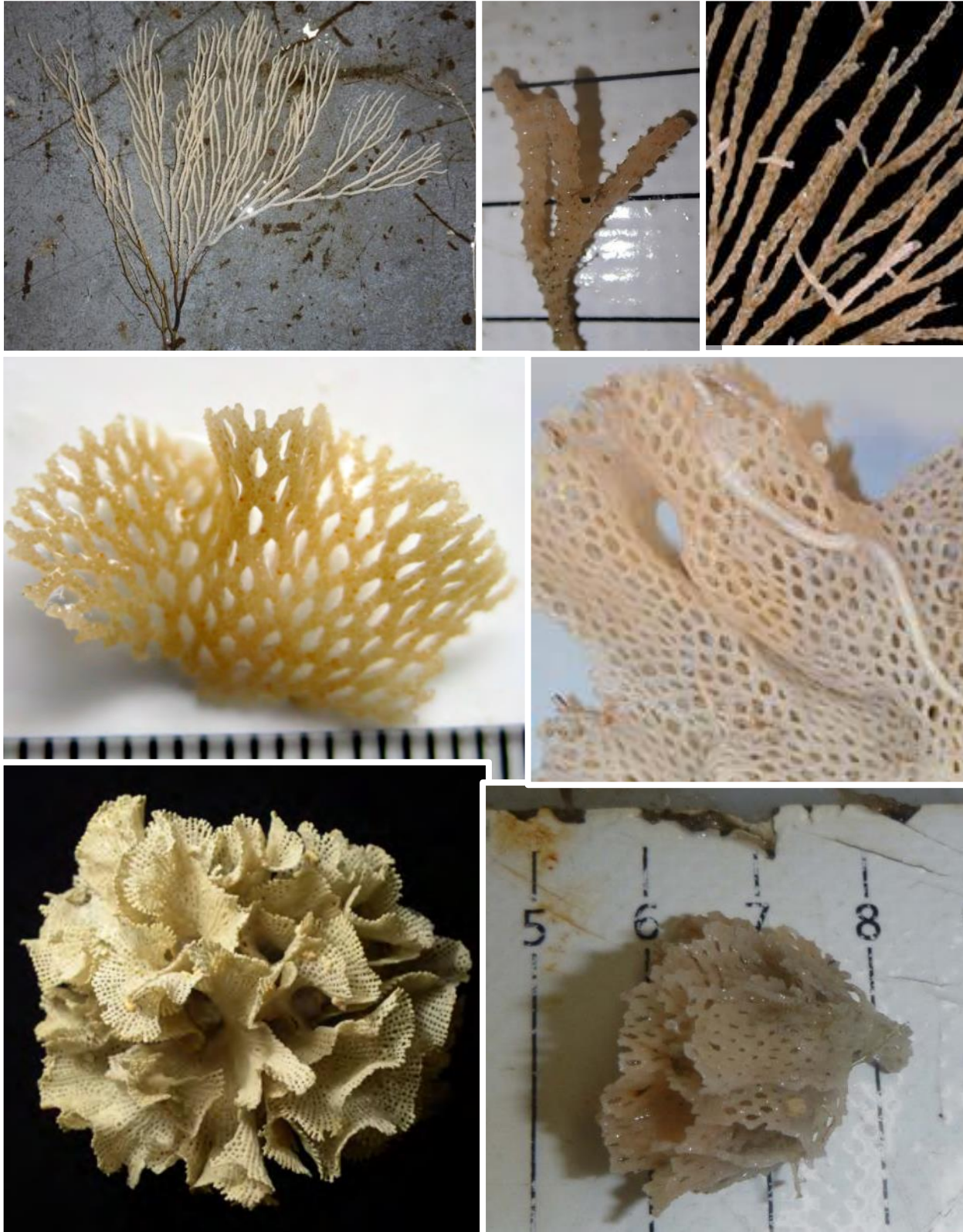
Black corals (COB)

Only use this code if you are certain of the coral type. **If you are uncertain of the coral type, use code COU.**



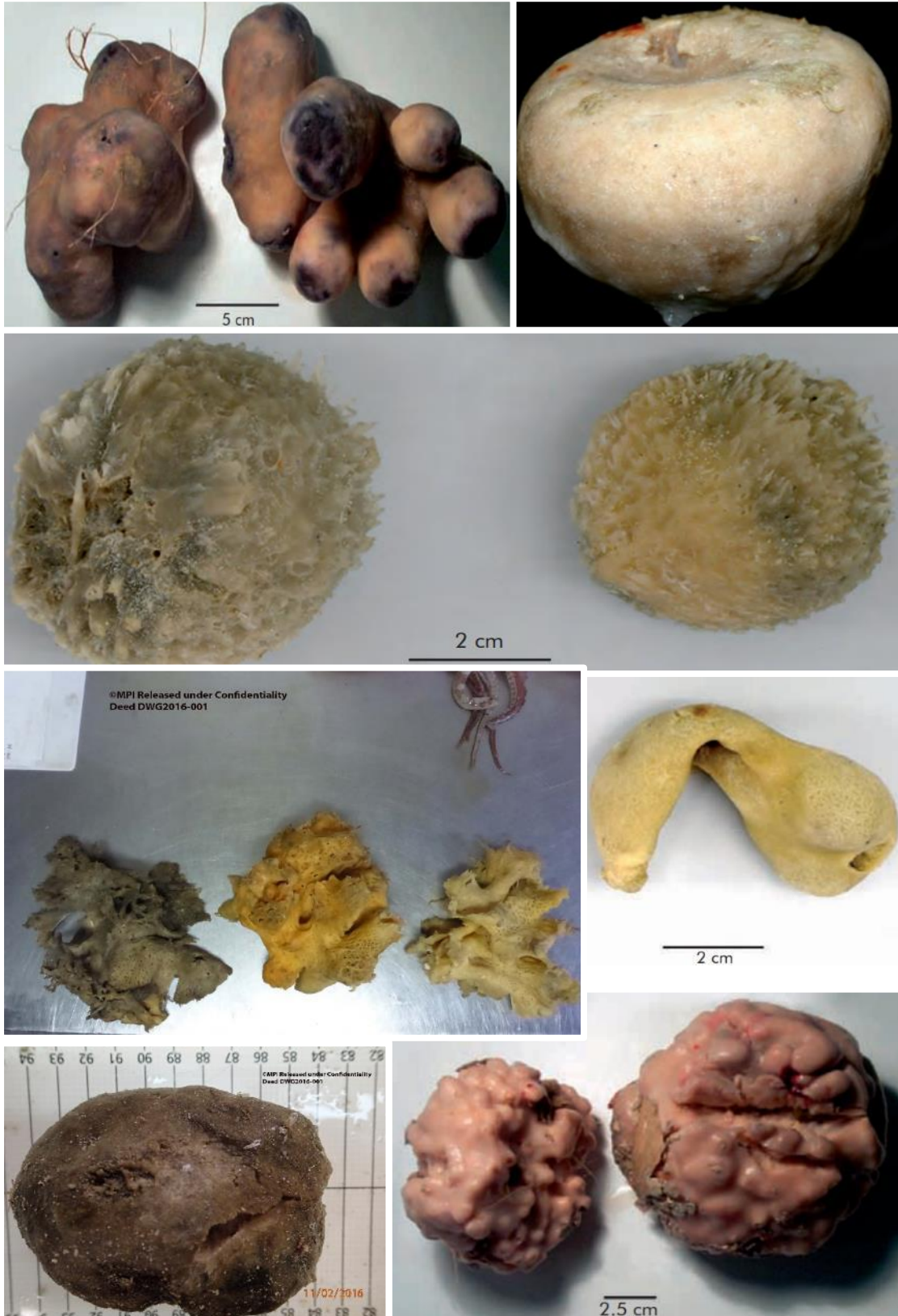
BRYOZOANS (COZ)

- Plant-like with branches and trunks but 'crunchy', can also be flat, encrusting colonies also 'crunchy'; skeleton made up of many tiny individuals called zooids.
- All structures within one colony are identical. Often resemble hard corals.



SPONGES (ONG)

- Spongy, no definite appendages, some with obvious glass spicules.
- Variety of shapes and structures including encrusting mats, tubular, round, fan-shaped, vase-shaped and branching.
- If unsure break off a small piece, internally should look like and feel like a bath sponge.



SPONGES (ONG)

