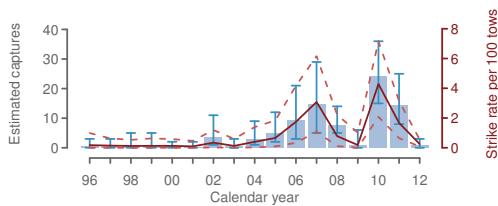


APPENDIX A.15: Sea lion captures in the Campbell Island southern blue whiting fishery

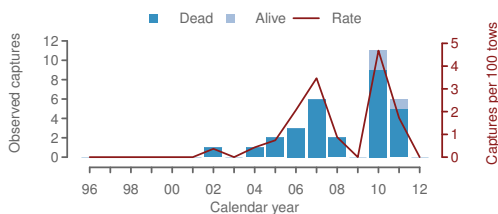
Table A-15: Annual trawl effort, observer coverage, observed number of sea lion captures, observed capture rate (sea lion per 100 tows), estimated sea lion captures, and the estimated strike rate (with 95% confidence intervals), in the Campbell Island southern blue whiting fishery.

	Effort	Observed			Est. captures		Est. strike rate	
		% obs.	Capt.	Rate	Mean	95% c.i.	Mean	95% c.i.
1996	474	27	0	-	0	0-3	0.2	0.0-1.0
1997	641	34	0	-	0	0-3	0.1	0.0-0.6
1998	963	29	0	-	1	0-5	0.1	0.0-0.5
1999	788	28	0	-	1	0-5	0.1	0.0-0.6
2000	447	52	0	-	0	0-2	0.1	0.0-0.6
2001	672	60	0	-	0	0-2	0.1	0.0-0.5
2002	980	28	1	0.4	3	1-11	0.3	0.0-1.2
2003	599	43	0	-	0	0-3	0.1	0.0-0.6
2004	690	34	1	0.4	3	1-9	0.4	0.0-1.4
2005	726	37	2	0.7	5	2-12	0.7	0.1-1.8
2006	521	28	3	2.1	9	3-21	1.7	0.3-4.2
2007	544	32	6	3.5	15	5-29	3.1	1.1-6.2
2008	557	41	2	0.9	8	5-14	0.8	0.1-2.2
2009	627	20	0	-	1	0-6	0.2	0.0-1.0
2010	550	43	11	4.7	24	15-36	4.3	2.1-7.2
2011	886	39	6	1.7	14	8-25	1.7	0.6-3.1
2012	575	76	0	-	1	0-3	0.2	0.1-0.6

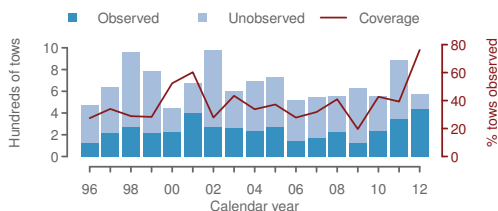
(a) Estimated captures



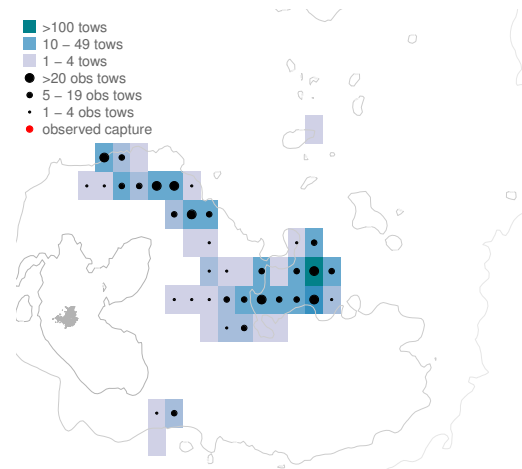
(b) Observed captures



(c) Effort, and observer coverage



(d) January 2012 to December 2012



(e) Monthly distribution, all years

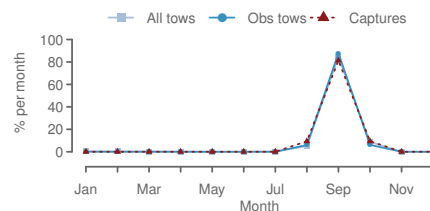


Figure A-15: Annual time series of (a) estimated sea lion captures, (b) observed sea lion captures and the capture rate, and (c) trawl effort and observer coverage, in the Campbell Island southern blue whiting fishery from 2000 to 2012. In map (d) average effort is plotted in a blue colour scale, observer coverage is indicated with black dots, and observed captures with red dots. Plot (e) shows mean monthly distribution of total effort, observed effort and observed captures.