

## Summary of Catch Limit Arrangements

For the 2014-15 fishing year, ORH3B quota owners have collectively agreed to reduce the 2014-15 catch limit for the Northwest Chatham Rise (ORH3B NWCR) fishery set by the Minister for Primary Industries at 1,250 tonnes down to 1,043 tonnes by setting aside 207 tonnes of Annual Catch Entitlement (i.e ACE). The procedures are as set out in Deepwater Group Ltd's (DWG) Orange Roughy Operational Procedures.

## Rationale for the More Conservative Catch Arrangements

The Ministry for Primary Industries' (MPI) advice to the Minister in their IPP on orange roughy (ORH) catch limits for 2014-15 is based on five-year forward projections using the 2014 stock assessment results.

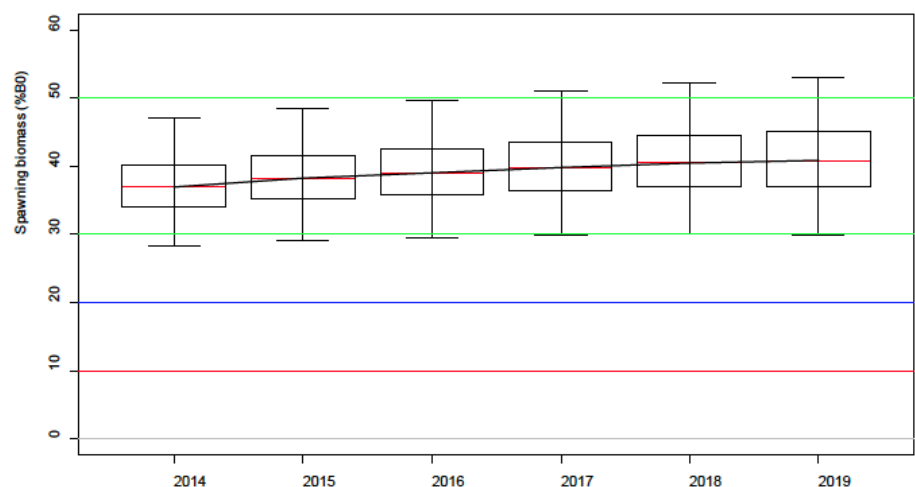
Since then, a Management Strategy Evaluation (MSE) has been completed and adopted by both ORH3B quota owners and MPI for those ORH stocks being assessed for MSC certification. Within the MSE the Harvest Control Rule (HCR) meets the requirements of both the MSC Fisheries Standard and the Fisheries Act 1996. This HCR is more conservative than the requirements of the Fisheries Act 1996.

The application of the HCR to the ORH3B NWCR fishery provides a catch limit of 1,043 tonnes for 2014-15, 207 tonnes less than the 1,250 tonnes agreed to by the Minister for Primary Industries.

Accordingly, ORH3B quota owners have agreed to reduce the catch limit from this fishery to 1,043 tonnes by collectively setting aside (i.e. 'shelving') 207 t of ACE for 2014-15.

## Outcomes from MSE Analyses

The current stock size of ORH3B NWCR is estimated to be 37%  $B_0$ , below the mid-point of the target range (i.e. <40%  $B_0$ , target range 30-50%  $B_0$ ). The catch limit from the HCR (1,043 t) provides for the spawning stock biomass to continue to increase in size (Figure 1). As the ORH3B NWCR stock size increases, the HCR allows for concurrent catch limit increases.



**Figure 1 ORH3B NWCR Base Model: Projections under Dynamic HCR10. The box and whisker plots are of projected mid-season spawning biomass. The medians are shown by horizontal red lines; the boxes cover the middle 50%; the whiskers extend to 95%.**

---

These biomass projections in Figure 1 are based on the 2014 stock assessment and the MSE and provide for the following projected catch limits:

- 2014-15 1,043 t
- 2015-16 1,043 t
- 2016-17 1,043 t
- 2017-18 1,043 t
- 2018-19 1,332 t

MPI's planned schedule of stock assessments has the next assessment of ORH3B NWCR in 2018-19. The catch limit will be revised earlier than 2018-19 if new data becomes available before that time.

---

## **Administration of ACE 'Shelving' Arrangement**

DWG has contracted [FishServe \(www.fisherve.co.nz\)](http://www.fisherve.co.nz) to administer the 'shelving' and to transfer the ACE from each quota holder to be held in trust in DWG's account.

FishServe has provided each ORH3B quota owner with the documentation to affect the transfers of the correct quantities of ACE to DWG. Of the 207 tonnes of ACE sought, 206 tonnes (99.5%) has been transferred into DWG's account.

---

Sharleen Gargiulo

*Policy Advisor*

10 December 2014